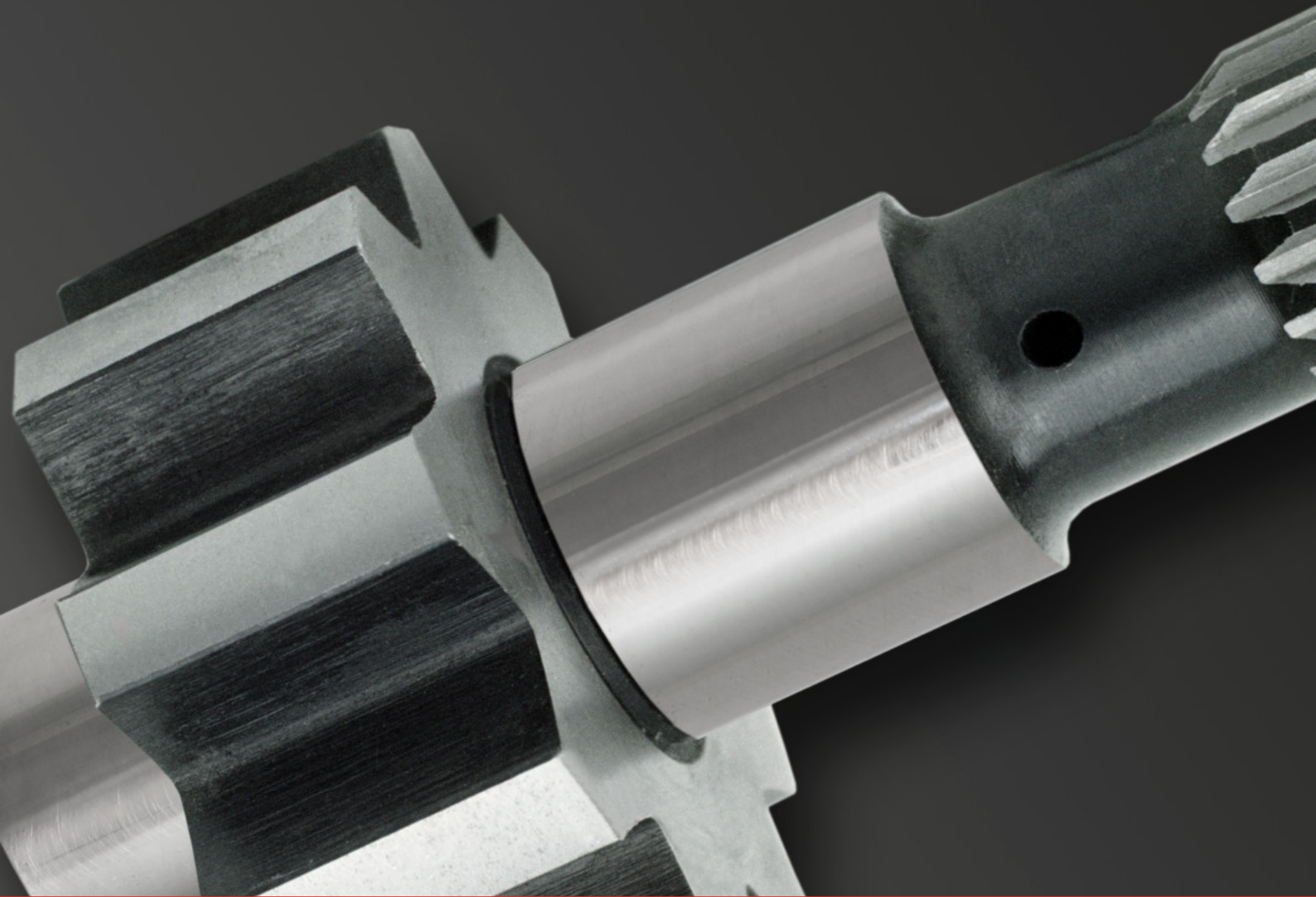


supfina



LCM

“新型的Supfina LeanCostMachine®超精机  
适用于多种应用加工，具有高性价比，高柔  
性和价格合理的特点。”

## 通用性

由於採用模組化結構

**Universal**

due to modular construction.

“The new Supfina LeanCostMachine®  
can handle the most diverse applications  
at maximum economy. It's flexible and  
affordable.”







憑藉最新的LeanCostMachine，Supfina為中小尺寸的超精加工提供了經濟而靈活、高水準且多功能的選擇。這種用途極廣的模組化系統配備了最先進的機器技術，符合品質和工藝可靠性的最高標準，特別是在汽車工業、OEM 供應商、液壓和航空航天行業、發電和醫療技術以及工程等領域。

Supfina LeanCostMachine®可配備現成的組裝模組，以配合特定的加工任務。無論是固定位置、手動調節的還是數位控制，多達6個用於砥石和拋光帶超精加工的Supfina配件裝置，可以與毛刷和拋光附件同時使用

Supfina's new LeanCostMachine® offers optimal versatility for superfinishing small and medium-size runs of parts — economically and flexibly. Its modular system is equipped with state-of-the-art technology and meets the highest standards for quality and process dependability, especially for the automotive industry and its OEM suppliers; the hydraulics, aerospace, power generation, and medical technology industries; as well as for other engineering applications.

The LeanCostMachine® can be equipped with pre-assembled modules designed to match specific machining tasks. Whether fixed in place, manually adjustable, or NC-controlled, up to six Supfina attachments for stone and tape finishing can be used at the same time as the brushing and polishing attachments.

## 超精加工

經濟實惠，功能多樣，適合未來發展

## Superfinishing

Affordable, versatile, and fit for the future

supfina LCM

中心距離  
Distance between centers

40 – 800 mm

工件直徑  
Workpiece diameter

250 mm

超精加工刀具  
Superfinishing tools

超精拋光帶或砥石、杯狀砂輪、毛刷和拋光盤  
Superfinishing tape or stone; cup wheel; brushing and polishing disk

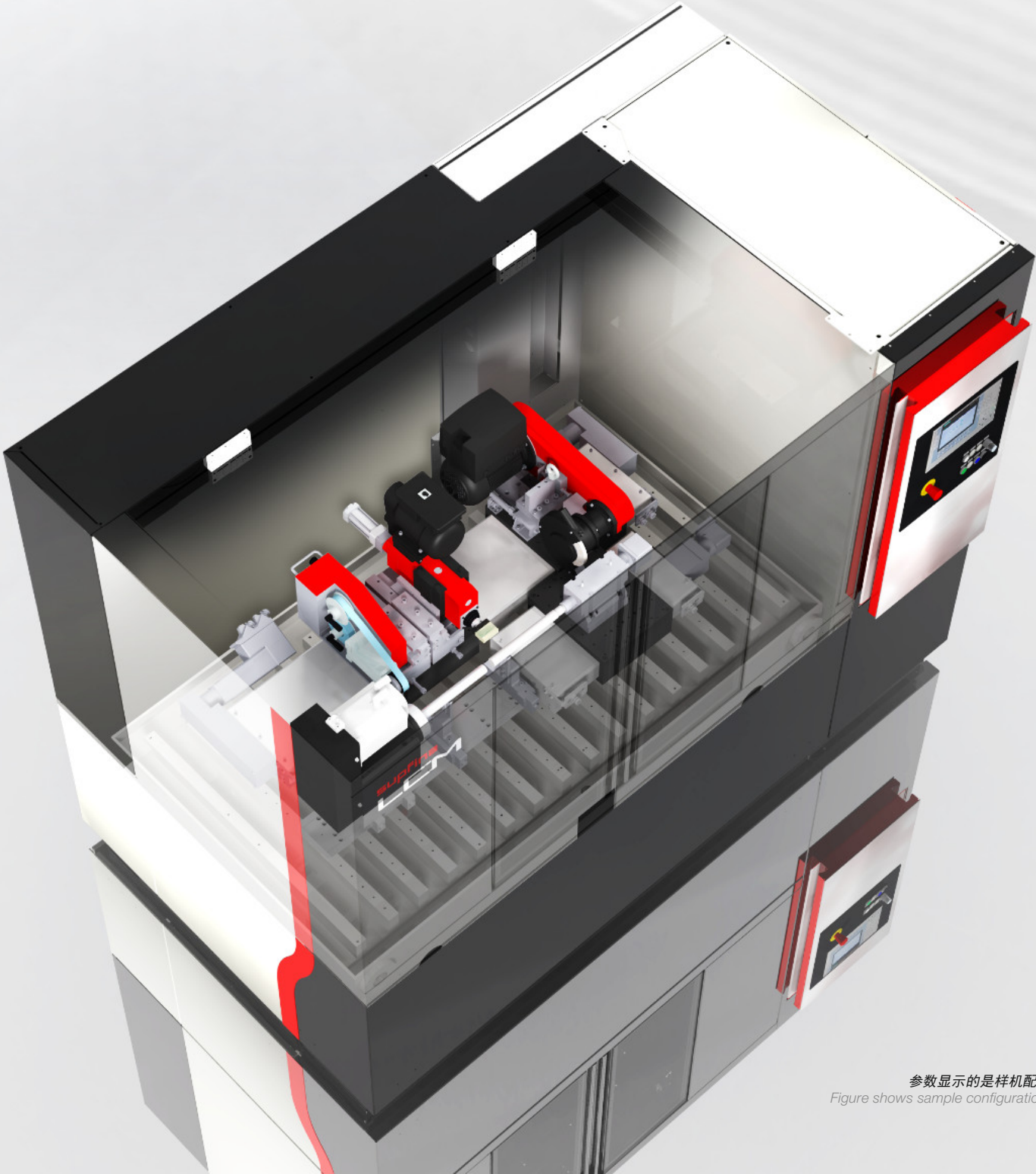
超精加工附件  
Superfinishing attachments

1–6

壓縮空氣供應  
Compressed air supply

4.5 – 6.0 bar

形式和功能  
理想的可及性  
**Form and function**  
Ideal accessibility



参数显示的是样机配置  
Figure shows sample configuration.



除了如齒輪軸、平衡軸、凸輪軸和偏心軸等類似軸的形狀，連小齒輪齒條和環形密封件的平坦區域、凸輪從動件(挺杆)和摩擦墊圈都可以輕鬆加工。一般來說，從軟鋼到極硬的陶瓷的所有材料都可以進行超精加工。

我們所有的LeanCostMachines(LCM)都可以手動或配置通過重力裝載、龍門裝載、機器人或計量帶的裝載/卸載系統。這意味著，在任何時候，從一次性製造到系列生產，都能保證經濟的零件處理。

只要向我們諮詢，將為您提供最經濟的解決方案。

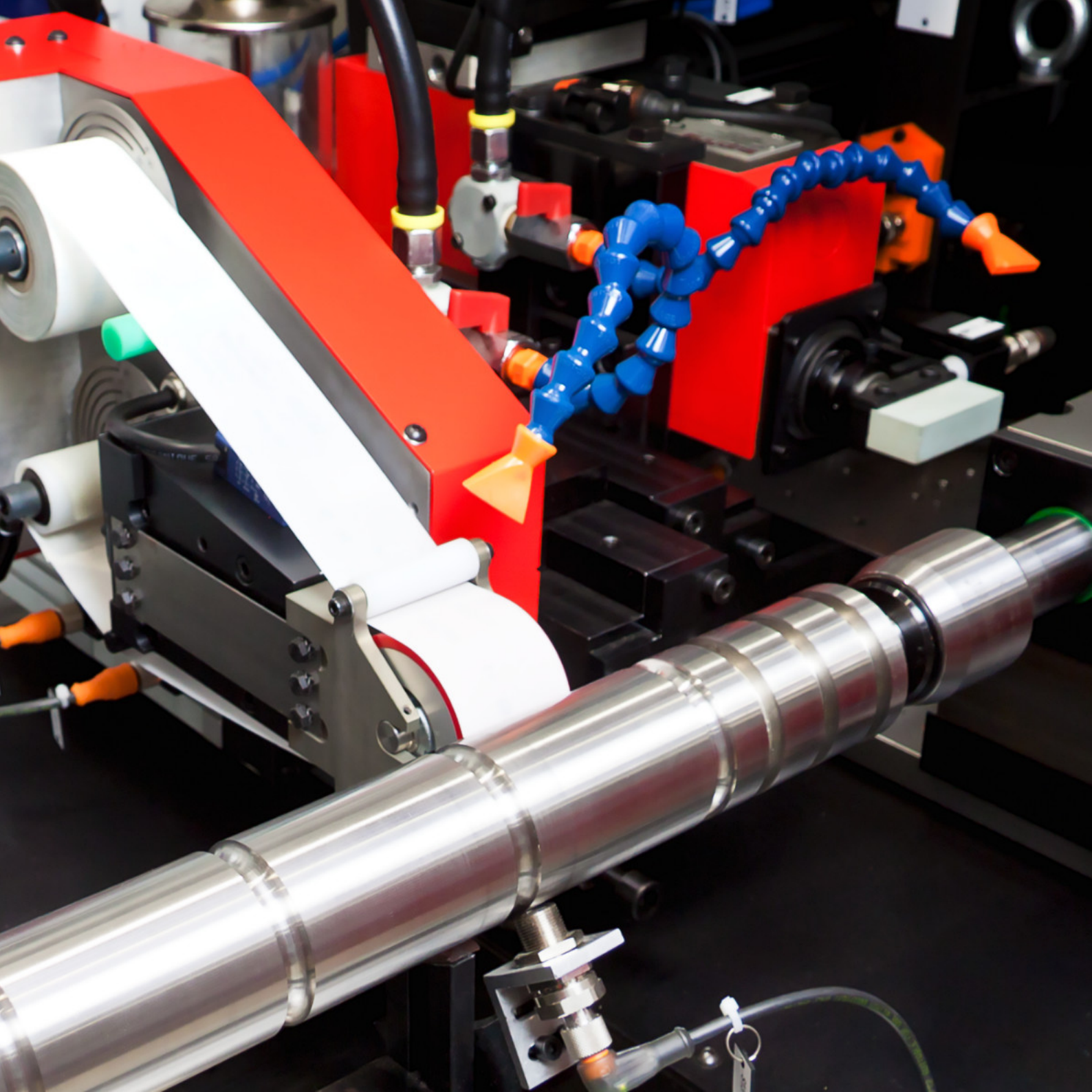
In addition to gear shafts, balancer shafts, camshafts, and eccentric shafts, the LeanCostMachine<sup>®</sup> can easily machine pinion racks and the flat areas of ring seals, bucket tappets, and friction washers. As a rule, any material — from soft steel to extremely hard ceramic — can be superfinished.

Each LeanCostMachine® can be loaded manually or automatically by gravity feed, gantry feed, or robot load and unload. Thus, economical part-handling is guaranteed, whether it's for one-off manufacturing or for series production.

Ask us how our flexible, affordable solutions  
can work for you.

**超精工艺**  
小批量加工  
**Superfinishing**  
for small runs





- 新型控制面板使操作更简便，工件设定更快捷
- 现代化的过滤设备提高了泵体的功率和表现能力。
- 多达6套Supfina抛光附件可以安装在数控滑板或燕尾式导轨上，也可以永久地安装在床身上。
- 为每种操作工艺提供合适的工件夹持系统。工件换型更快速、性价比高。
- 工件可以手动装夹到可调式夹具。也可以自动定位或通过可选的进给系统在机床顶部，前侧或侧面装夹。这一类自动化集成系统在整条生产线上可发挥快速简便的作用。

- A new comfort control panel allows easier operation and faster workpiece setup.
- A modernized filter cart means increased pump performance.
- As many as six Supfina attachments can be fitted to the NC slide or dovetail guide, or they can be installed permanently on the machine base.
- We provide the exact workpiece-clamping system for every machining process. The changeover is quick and cost-effective.
- Workpieces can be placed manually in adjustable workpiece holders. They also can be positioned automatically or by an optional infeed system from above, from the front, or from the side. Such automated integration into a production line is fast and easy.

## 事實 主要特點 **Facts** Key features



Supfina Grieshaber GmbH & Co. KG  
Schmelzegrün 7 · 77709 Wolfach / Germany  
Phone +49 7834 866-0 · Fax +49 7834 866-200  
info@supfina.com · www.supfina.com



Supfina Machine Company, Inc.  
181 Circuit Drive · N. Kingstown, RI 02852 / USA  
Phone +1 401 294-6600 · Fax +1 401 294-6262  
info@supfina.com · www.supfina.com



Supfina Grieshaber GmbH & Co. KG  
Beijing representative office  
DiYang Tower 1202B  
Chaoyang District Beijing 100027 / P.R. China  
Phone +86 10 84536-669 · Fax +86 10 84536-670  
supfina@126.com · www.supfina.com

Surface Finishing Systems  
**www.supfina.com**